

CLEVELAND COUNTY EMS WORKFORCE HOUSING

Mobile Modular provided Cleveland County EMS with permanent workforce housing to offer services during medical emergencies.



THE CHALLENGE

Cleveland County Emergency Medical Services (EMS) provides life-saving services to citizens during medical emergencies. They needed a quick housing solution for the responders while on the job.

THE SOLUTION

Mobile Modular provided them with a living space that has 2 bedrooms, 3 full bathrooms, a kitchen and living room as well as laundry space. We finished the exterior with site-built canopies, wrap-around decking, and brick skirting to give the building a more permanent look. They chose the modular solution because of the cost and time savings as well as the ability to relocate the building wherever needed.

Customer Name: Cleveland County EMS

Project Location: Casar, NC

Building Type(s): Modular Dormitory

Module Count: 3

Total Sq. Ft: 1,344 sq. ft.

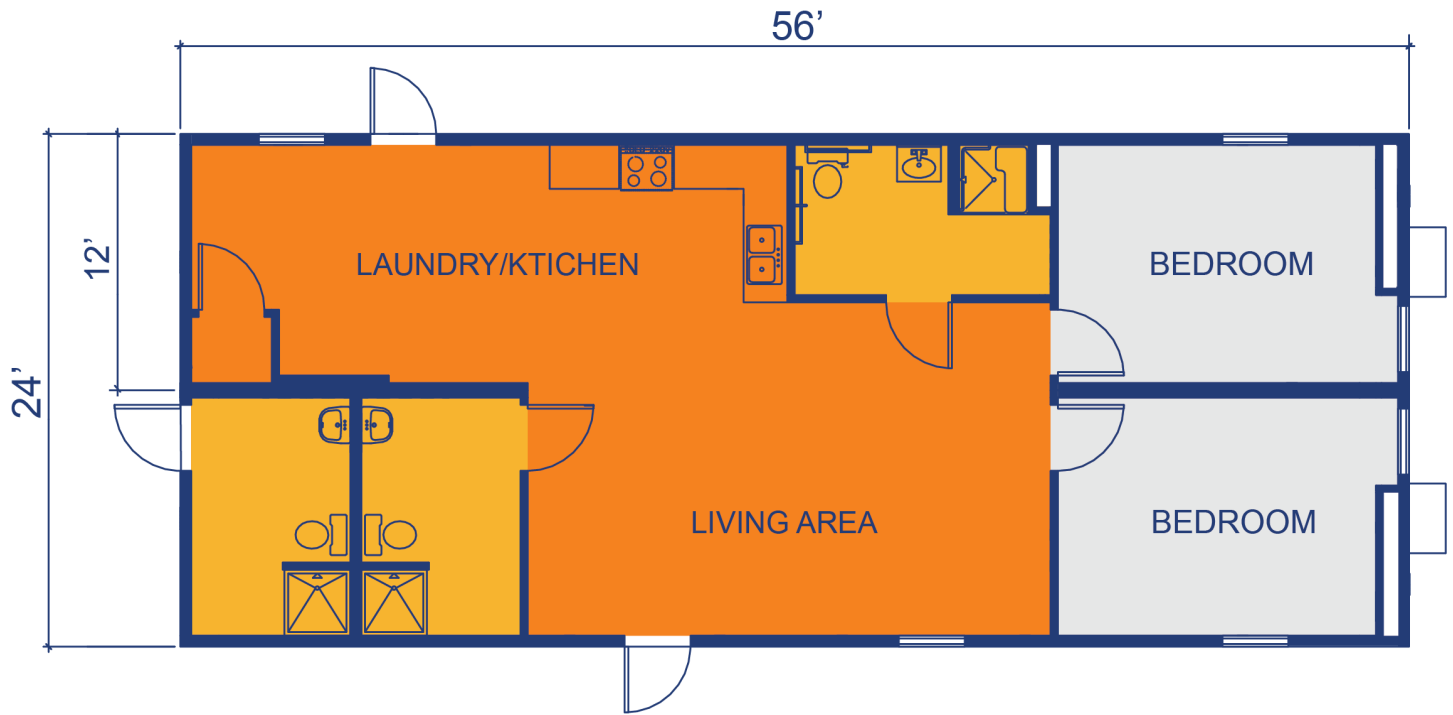


Contact Us Today!

866.889.7777 • mobilemodular.com



BUILDING LAYOUT



Contact Us Today!

866.889.7777 • mobilemodular.com

